

ETB4250A-3.5-Poles, Terminal Block, 3.5 mm pitch

Features

Mechanical Properties

Parameter:	Description
Connector Type:	Terminal Block
Dimensions:	$((3.5 \times \text{number of positions}) + 1.8) * 12 * 14 \pm 0.1$
Operating Temperature Range:	-40°C~+105°C
Pitch:	3.5 mm
Number of Contacts:	Connectors are linkable
Stripping Length:	8.5 ~ 9.5 mm
Wire Range:	22 ~ 16 AWG / 0.2 ~ 1.5mm ²
Pin Header:	Copper Alloy, Sn Plated
Housing:	PA66 UL94V-0



Typical applications

- Wire to Board
- Board to Wire

Electrical Properties

Parameter:	Description	
	UL	IEC
Rated Voltage:	300V	320V
Rated Current:	8A	10A
Withstand Voltage:	1600V AC min.	

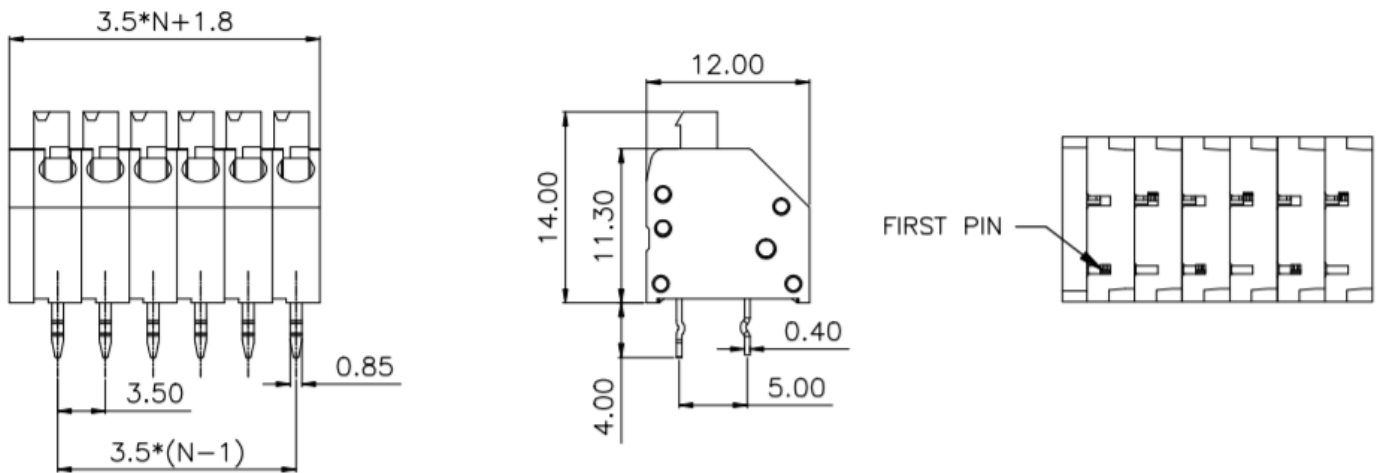
Description

The ETB4250A-3.5-Poles is a terminal block with 3.5 mm pitch. The connector is linkable so any number of contact are supported.

ETB4250A-3.5-Poles, Terminal Block, 3.5 mm pitch

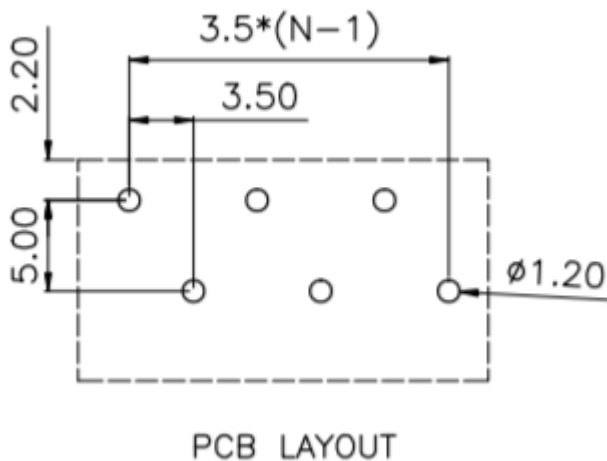
Dimensions

*unit: mm



PCB footprint

*unit: mm



Ordering information

Ordering can be done via www.summit-electronics.com or via info@summit-electronics.com. Please contact us for more information. Customisation of the product is available on request.

Technical support

For all product questions please contact us via info@summit-electronics.com